

PRODUCT DATA SHEET

Earthing components

Code: 6563402-70

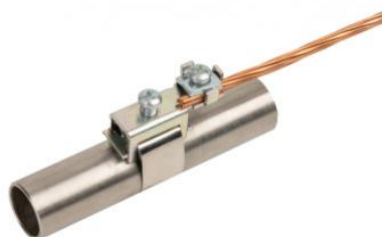
Description: Adjustable pipe clamp, code: 6563402

Application

Adjustable pipe clamp, for connecting solid round or stranded conductor to pipe. Used in equipotential bonding.

Classification as per IEC EN 62561

- Normal duty (N – 50 kA)
- General use
- Not intended to withstand a static mechanical load
- Non-permanent connection



Technical characteristics -- Installation instructions

Material	Stainless steel (SSt)
Description	Is consisted of a clamp which connect the conductor and a tape of 20x0,25 mm dimensions, which connects the pipe.
Screws	M6x16 mm stainless steel screws
Pipe's diameter	1/8"-1½" (Ø8-49 mm)
Conductor's dimensions	4-25 mm ²
Connection arrangements	Parallel (B7), "T" (B8)
Installation	Above ground
Can be connected with	Al, Cu, Cu/eSn, Stainless Steel (SSt), Steel, St/eCu, St/tZn
Tightening torque	4 Nm

Testing as per IEC EN 62561

The component has successfully passed the testing requirements of standard IEC EN 62561-1 "Lightning protection system components (LPSC) – Part 1 : Requirements for connection components".

Test report No **30785** by accredited laboratory as per ISO 17025

Manufacturing Quality Control

Manufacturing quality control according standard ISO 9001

Country of Origin

Greece

Unit: piece / Package: 10 pieces