

PRODUCT DATA SHEET

LIGHTNING PROTECTION AND EARTHING SYSTEM COMPONENTS

Code: 62 01 000

ed.02/2021

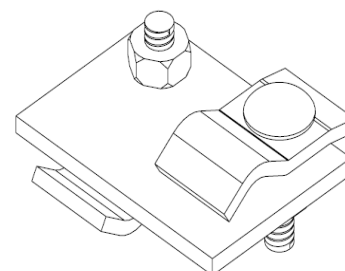
Description: Clamp fastener for foundation earthing system

Application

Clamp - fastener for electrical connection—fastening of reinforcement rebars to round or tape conductors.

Classification as per IEC EN 62561

- Heavy duty (H – 100 kA)
- Embedded in concrete
- Not intended to withstand a static mechanical load
- Non-permanent connection



Technical characteristics

Material	Hot dip galvanized steel (St/tZn)
Description	Is consisted of a plate with dimensions 83x60 mm and two "jaws" for the conductor/rebar clamping.
Bolts / nuts	M10x30 mm, St/eZn carriage bolts M10 St/eZn nuts

Installation instructions

Conductor's dimensions	Ø8–10 mm (50–70 mm ²)
Tape's dimensions	Up to 40 mm width & up to 4 mm thickness
Reinforcement rebar's dimensions	Ø10–22mm
Connection arrangements	Cross (B1) Parallel (B2)
Installation	Embedded in concrete
Can be connected with	Cu, Cu/eSn, St, Stainless Steel (SSt), St/eCu, St/tZn
Tightening torque	35 Nm

Testing as per IEC EN 62561

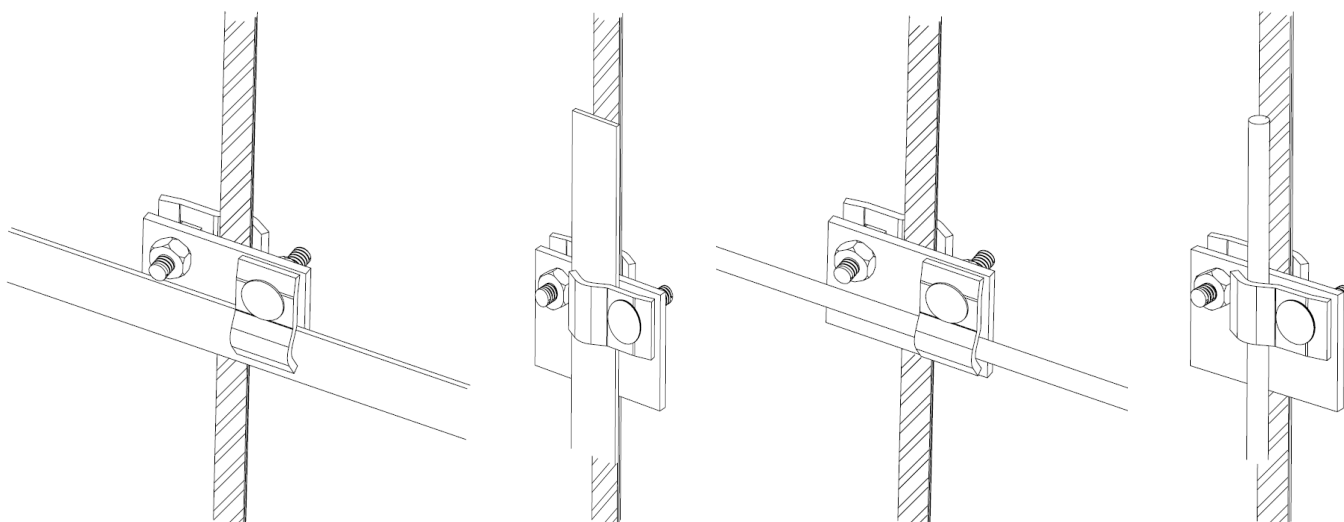
The component has successfully passed the testing requirements of standard IEC EN 62561-1 "Lightning protection system components (LPSC) – Part 1 : Requirements for connection components".
Test report No **31858** by accredited laboratory as per ISO 17025

Manufacturing Quality Control

Manufacturing quality control according standard ISO 9001

Country of Origin

Greece

Unit: piece / Package: 50 pieces


We reserve the right to introduce changes in the component due to technical evolution.