

## PRODUCT DATA SHEET

### LIGHTNING PROTECTION AND EARTHING SYSTEM COMPONENTS

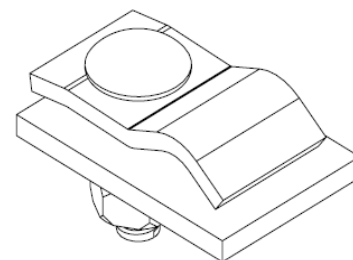
**Code: 62 01 001**
**ed.03/2021**
**Description: Clamp fastener for foundation earthing system**

#### Application

Clamp - fastener for electrical connection—fastening of reinforcement rebars to tape conductors.

#### Classification as per IEC EN 62561

- Heavy duty (H – 100 kA)
- Embedded in concrete
- Not intended to withstand a static mechanical load
- Non-permanent connection



#### Technical characteristics

Material	Hot dip galvanized steel (St/tZn)
Description	Is consisted of a plate with dimensions 60x40 mm and one "jaw" for the tape/rebar clamping.
Bolts / nuts	M10x30 mm, St/eZn carriage bolt M10 St/eZn nut

#### Installation instructions

Tape's dimensions	Up to 40 mm width & up to 4 mm thickness
Reinforcement rebar's dimensions	Ø10–17 mm
Arrangement	Parallel connection (B2)
Installation	Embedded in concrete
Can be connected with	Cu, Cu/eSn, St, Stainless Steel (SSt), St/tZn
Tightening torque	17 Nm

#### Testing as per IEC EN 62561

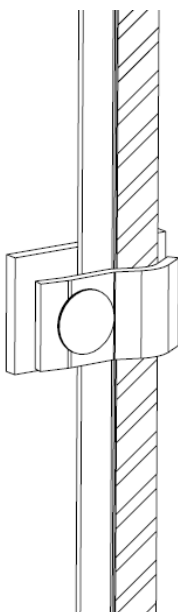
The component has successfully passed the testing requirements of standard IEC EN 62561-1 "Lightning protection system components (LPSC) – Part 1 : Requirements for connection components".  
Test report No **30686** by accredited laboratory as per ISO 17025

#### Manufacturing Quality Control

Manufacturing quality control according standard ISO 9001

#### Country of Origin

Greece

**Unit: piece / Package: 25 pieces**


We reserve the right to introduce changes in the component due to technical evolution.