

PRODUCT DATA SHEET

LIGHTNING PROTECTION AND EARTHING SYSTEM COMPONENTS

Code: 63 01 000

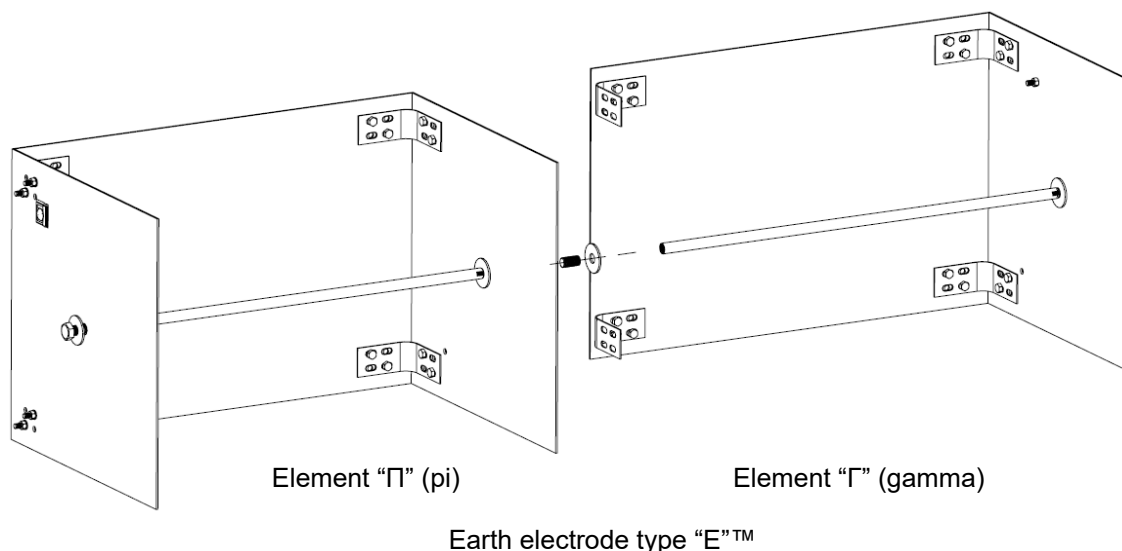
ed.02/2021

Description: St/tZn earth electrode type "E"TM

Page 1 of 2

Application

Hot dip galvanized steel (St/tZn) earth electrode type "E"TM, consisting of an element type "Π" (pi) and an element type "Γ" (gamma). It is equivalent to 6 earth rods 1,5m length positioned one to another in a distance of 3m.



Technical characteristics

Dimensions (LxWxH)	1500x500x500 mm
Element "Π" (pi)	Consisted of two plates of 500x500x3 mm dimensions and one plate of 750x500x3 mm dimensions, with all the needed accessories (bolts, nuts, washers, reinforcement bar, connection angles).
Element "Γ" (gama)	Consisted of one plate of 500x500x3 mm dimensions and one plate of 750x500x3 mm dimensions, with all the needed accessories (bolts, nuts, washers, reinforcement bar, connection angles).
Core material / Coating material	Steel / Zinc
Zinc coating weight	>500 gr/m ²
Type of coating method	Hot dip
Bolts / nuts material	Stainless steel grade V2A
Electrical resistivity	<0,25 μΩm
Tensile strength	290 – 510 N/mm ²

Installation instructions

Installation	Buried in ground, embedded in concrete
Can be connected in ground with	SSt (Stainless Steel), St/tZn
Can be connected in concrete with	Cu, Cu-A (copper alloy), Cu/eSn, SSt (Stainless Steel), St/eCu, St/tZn
Connection to conductor	By stainless steel clamp ELEMKO code 62 66 108 (provided)
Extension	By additional elements "Γ" (gama)

Comply with

The component complies with standard IEC EN 62561-2 "Lightning protection system components (LPSC) – Part 2 : Requirements for conductors and earth electrodes".

Manufacturing Quality Control

Manufacturing quality control according standard ISO 9001

Country of Origin

Greece

Optional accessories

Element "Γ" (gama), ELEMKO code 63 01 002

Unit: piece / Package: 1 piece

See following applications of the earth electrode.

PRODUCT DATA SHEET

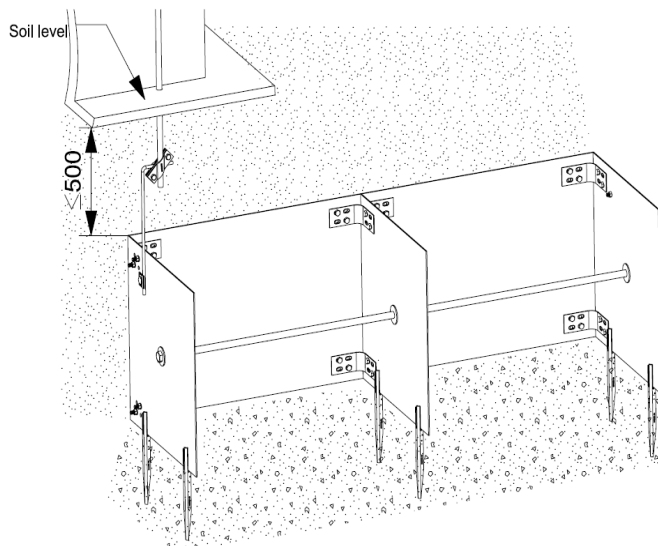
LIGHTNING PROTECTION AND EARTHING SYSTEM COMPONENTS

Code: 63 01 000

ed.02/2021

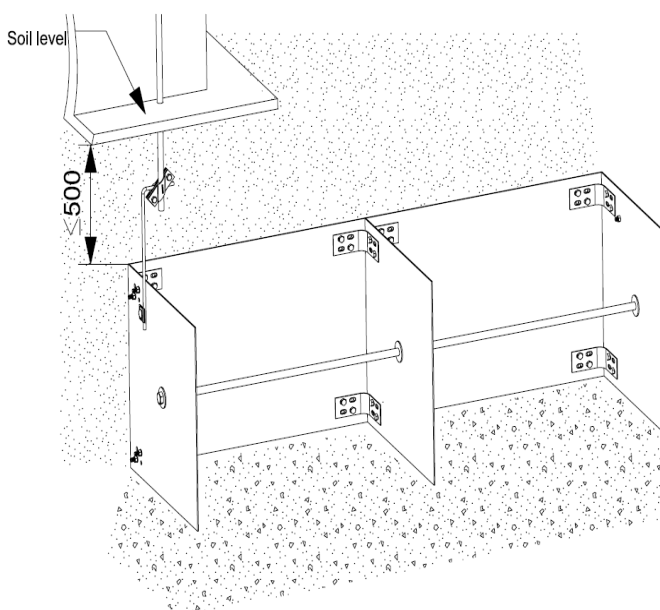
Description: St/tZn earth electrode type "E"TM

Page 2 of 2



Installation of earth electrode type "E"TM.
Embedded in concrete.

The electrode should be supported by suitable fasteners (e.g. part number ELEMKO 61 03 025) so as to be elevated at least 5 cm from the bottom of the pit, in order to be completely embedded in concrete and to avoid any electrochemical corrosion due to the contact to different materials (concrete, soil).



Installation of earth electrode type "E"TM.
Buried in ground.

We reserve the right to introduce changes in the component due to technical evolution.