

PRODUCT DATA SHEET

LIGHTNING PROTECTION AND EARTHING SYSTEM COMPONENTS

Code: 63 61 000

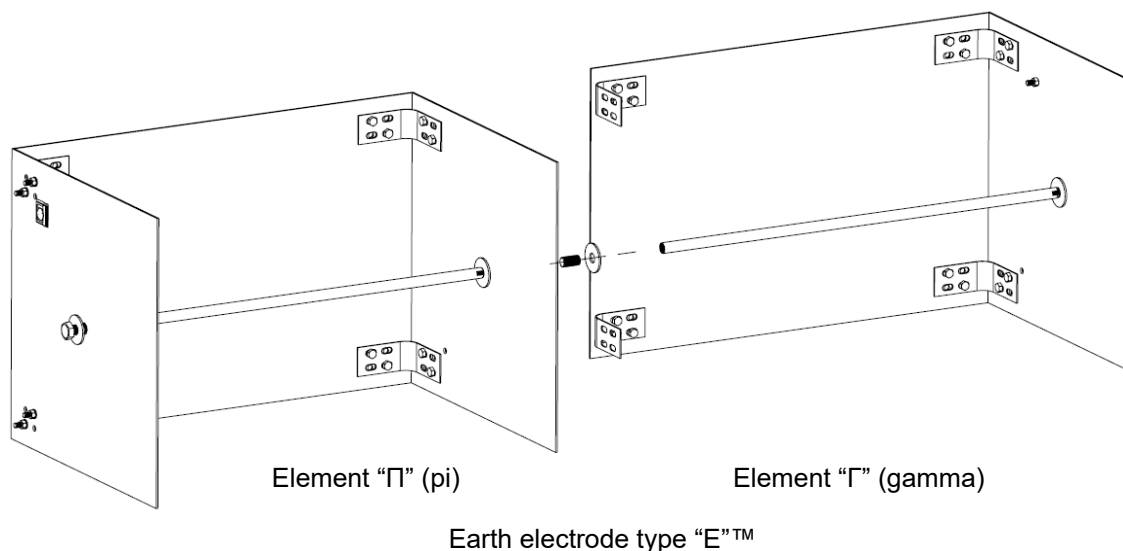
ed.02/2021

Description: Stainless steel earth electrode type "E"TM

Page 1 of 2

Application

Earth electrode type "E"TM, consisting of an element type "Π" (pi) and an element type "Γ" (gamma). It is equivalent to 6 earth rods 1,5m length positioned one to another in a distance of 3m.



Technical characteristics

Material	Stainless steel (SSt – grade V2A/304)
Dimensions (LxWxH)	1500x500x500 mm
Element "Π" (pi)	Consisted of two plates of 500x500x3 mm dimensions and one plate of 750x500x3 mm dimensions, with all the needed accessories (bolts, nuts, washers, reinforcement bar, connection angles).
Element "Γ" (gama)	Consisted of one plate of 500x500x3 mm dimensions and one plate of 750x500x3 mm dimensions, with all the needed accessories (bolts, nuts, washers, reinforcement bar, connection angles).
Electrical resistivity	<0,80 μΩm
Tensile strength	350 – 770 N/mm ²

Installation instructions

Installation	Buried in ground*, embedded in concrete * Unsuitable for anaerobic soils, such as clayey ones etc, according to standard IEC EN 62305-3 Ed2 (§E.5.6.2.2.1).
Can be connected in ground with	Cu, Cu-A (copper alloy), Cu/eSn, SSt (Stainless Steel), St/eCu, St/tZn (St/tZn not simultaneously with Cu, Cu/eSn, St/eCu)
Can be connected in concrete with	Cu, Cu-A (copper alloy), Cu/eSn, SSt (Stainless Steel), St/eCu, St/tZn
Connection to conductor	By stainless steel clamp ELEMKO code 62 66 108 (provided)
Extension	By additional elements "Γ" (gama)

Comply with

The component complies with standard IEC EN 62561-2 "Lightning protection system components (LPSC) – Part 2 : Requirements for conductors and earth electrodes".

Manufacturing Quality Control

Manufacturing quality control according standard ISO 9001

Country of Origin

Greece

Optional accessories

Element "Γ" (gama), ELEMKO code 63 61 002

Unit: piece / Package: 1 piece

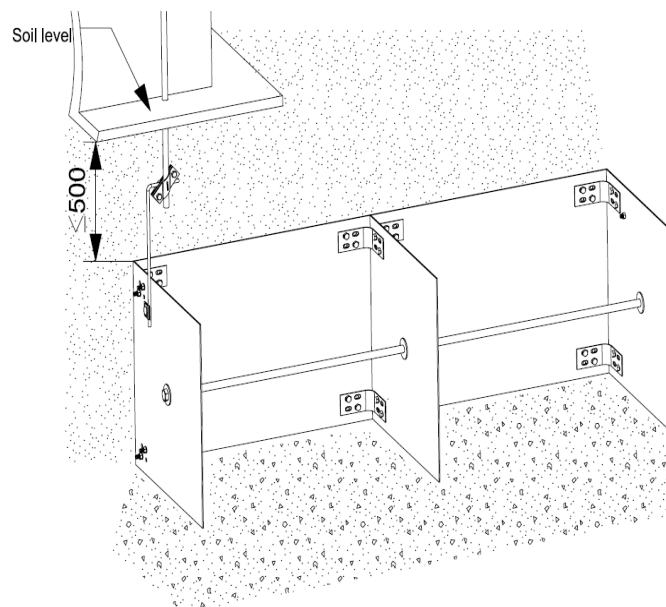
See following application of the earth electrode.

PRODUCT DATA SHEET**LIGHTNING PROTECTION AND EARTHING SYSTEM COMPONENTS****Code: 63 61 000**

ed.02/2021

Description: Stainless steel earth electrode type "E"TM

Page 2 of 2



Installation of earth electrode type "E"TM.

We reserve the right to introduce changes in the component due to technical evolution.