

## PRODUCT DATA SHEET

### LIGHTNING PROTECTION AND EARTHING SYSTEM COMPONENTS

**Code: 64 23 520**

**Description: 2 points copper earth lead in rod Ø15x2000 mm**

ed.02/2021

#### Application

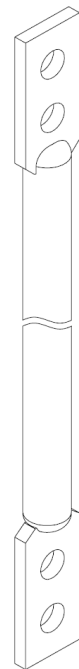
Copper earth lead-in rod, used as part of a down conductor in order to provide protection against mechanical stresses.

#### Technical characteristics

Diameter	15mm
Length	2000 mm
Material	Copper
Electrical resistivity	≤0,018 μΩm
Tensile strength	200 – 450 N/mm <sup>2</sup>

#### Installation instructions

Installation	Above ground, buried in ground, embedded in concrete
Can be connected above ground with	Cu, Cu-A (copper alloy), Cu/eSn, Stainless Steel (SSt), St/eCu
Can be connected buried in ground with	Cu, Cu-A (copper alloy), Cu/eSn, Stainless Steel (SSt), St/eCu
Can be connected in concrete with	Cu, Cu-A (copper alloy), Cu/eSn, Stainless Steel (SSt), St/eCu, St/tZn
Connection to conductors	By clamps



#### Testing as per IEC EN 62561

The component has successfully passed the testing requirements of standard IEC EN 62561-2 "Lightning protection system components (LPSC) – Part 2 : Requirements for conductors and earth electrodes".  
Test report No **31490** by accredited laboratory as per ISO 17025

#### Manufacturing Quality Control

Manufacturing quality control according standard ISO 9001

#### Country of Origin

Greece

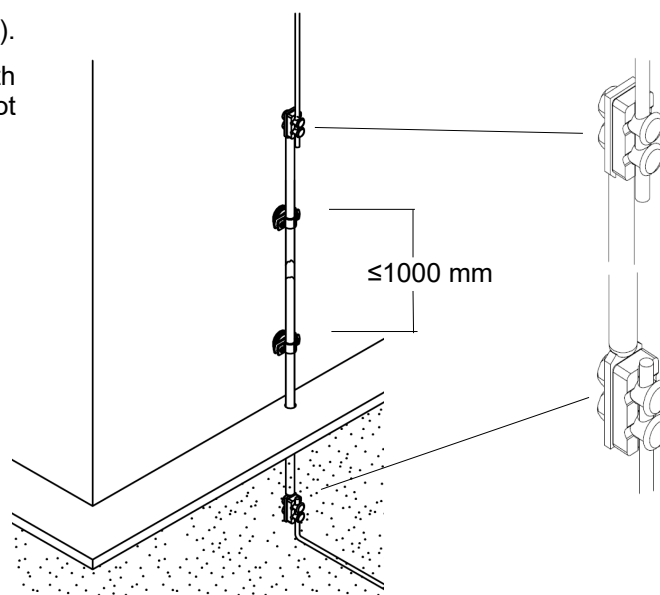
#### Needed accessories<sup>1)</sup>

Double bonding clamps e.g. ELEMKO code 6225204, fasteners e.g ELEMKO code 6121300.

#### Unit: piece / Package: 1 piece

Fixing with suitable fastener (not included).

Connection to down conductor and earth conductor through suitable clamps (not included).



<sup>1)</sup> See relevant data sheets

We reserve the right to introduce changes in the component due to technical evolution.