

## PRODUCT DATA SHEET

### LIGHTNING PROTECTION AND EARTHING SYSTEM COMPONENTS

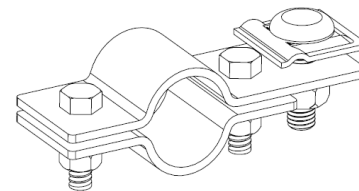
**Code: 65 21 031**
**ed.02/2021**
**Description: Connector for Franklin rod**

#### Application

Connector for connection of Franklin rod to solid round or stranded conductor.

#### Classification as per IEC 62561

- Heavy duty (H – 100 kA)
- General use
- Intended to withstand a static mechanical load
- Non-permanent connection



#### Technical characteristics

Material	Franklin rod pipe clamp: Nickel plated copper (Cu/eNi) Conductor clamp: Stainless steel (SSt)
Description	It is consisted of a pipe clamp which bonds the Franklin rod and a conductor clamp which bonds the conductor.
Bolts / nuts	M8x20 mm, V2A stainless steel hexagon head bolts M8 V2A stainless steel nuts M10x30 mm, V2A stainless steel carriage bolt M10 V2A stainless steel nut

#### Installation instructions

Franklin rod dimensions	Ø30 mm
Conductor's dimensions	Ø6–10 mm (35–70 mm <sup>2</sup> )
Connection arrangements	Parallel (B2) "T" (B4)
Installation	Outdoor
Can be connected with	Al, Cu, Cu/eNi, Cu/eSn, Stainless Steel (SSt), St/eCu, St/tZn
Tightening torque	13 Nm (M8), 17 Nm (M10)

#### Testing as per IEC 62561

The component has successfully passed the testing requirements of standard IEC EN 62561-1 "Lightning protection system components (LPSC) – Part 1 : Requirements for connection components".  
Test reports No **30873 & 30910** by accredited laboratory as per ISO 17025

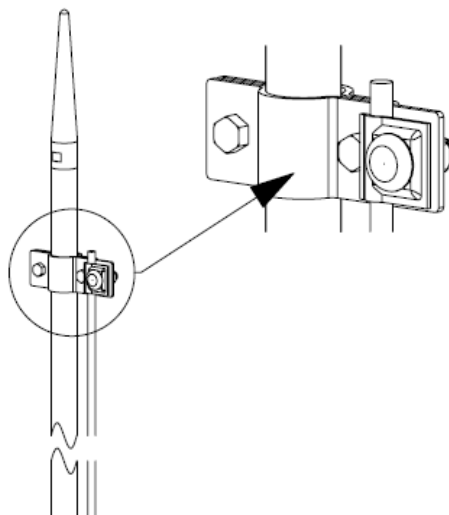
#### Manufacturing Quality Control

Manufacturing quality control according standard ISO 9001

#### Country of Origin

Greece

#### Unit: piece / Package: 1 piece



We reserve the right to introduce changes in the component due to technical evolution.