

1

2

3

4

5

6

A

A

B

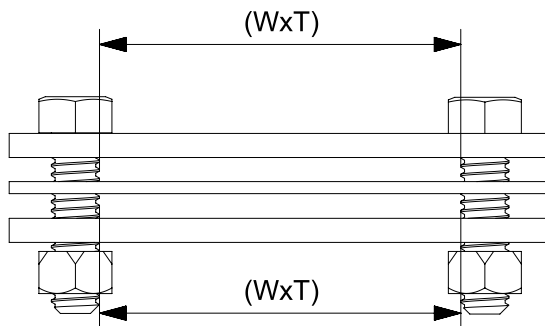
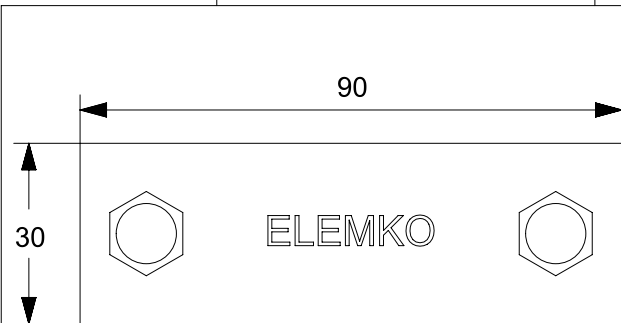
B

C

C

D

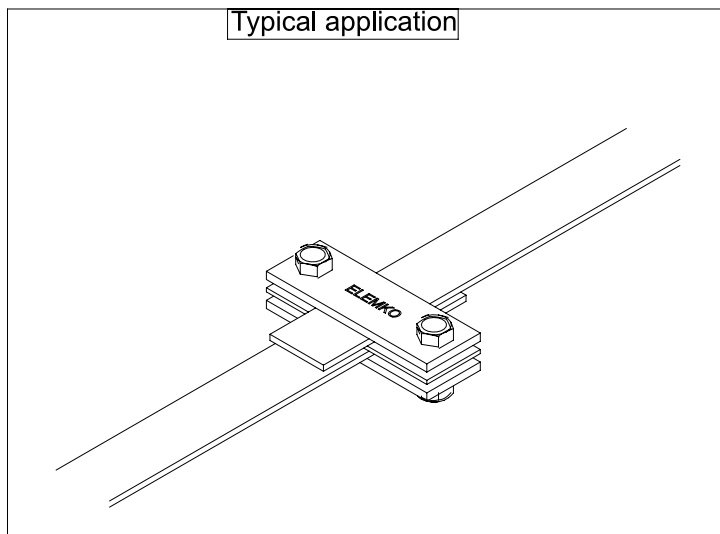
D



Description

Clamp tested according to IEC 62561-1, Class "H" (Heavy duty), for connecting tape conductors 20-60 mm up to 6 mm thickness. It is composed out of two plates with dimensions 90x30x4mm and one intermediate plate with dimensions 90x30x2 mm. The tightening is achieved by two screws M8x30 mm and two nuts M8.

Typical application



*Maximum dimensions
All dimensions in mm

Description	Raw material	(WxT) / (WxT)*	Item code	Optional conductor (Tape)
Cross and 'T'connector	St/tZn (St/tZn screws)	20-60x6 / 20-60x6	62 04 060	64 01 143
Cross and 'T'connector	St/tZn (SSt/V2A screws)	20-60x6 / 20-60x6	62 04 061	64 01 143
Cross and 'T'connector	Cu (SSt/V2A screws)	20-60x6 / 20-60x6	62 24 060	64 20 403
Cross and 'T'connector	Cu/eSn (SSt/V2A screws)	20-60x6 / 20-60x6	62 24 061	64 20 403



Title:

Cross and 'T'connector

FIRST ISSUED June 2016

DRAWN BY Dionysopoulos G.

CHECKED BY Kokkinos N.

APPROVED BY Kokkinos N.

SCALE None

ISSUANCE DATE July 2021

Model

62 x4 06x



SHEET 1 OF 1

1

2

3

4

5

A4