

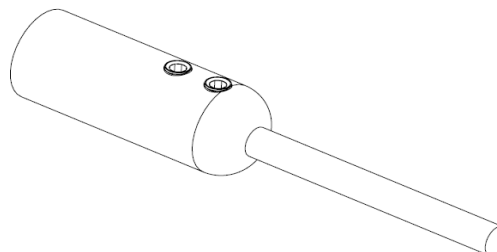
## PRODUCT DATA SHEET

### LIGHTNING PROTECTION AND EARTHING SYSTEM COMPONENTS

**Code: 65 40 002**
**ed.04/2023**
**Description: Down termination for LCCC insulating down conductor**
**page 1 of 2**

#### Application

Termination, for connecting the LCCC insulating down conductor (ELEMKO code 64 48 050) to the Lightning Protection System.



#### Classification as per IEC 62561

- Heavy duty (H – 100 kA)
- General use
- Not intended to withstand a static mechanical load
- Non-permanent connection

#### Technical characteristics

Material	Aluminium (Al)
Screws	M8x16 mm, V2A stainless steel hex socket set screws

#### Installation instructions

Connection to	- LCCC insulating down conductor (ELEMKO code 64 48 050) - Clamp for Ø10 mm conductor
Connections arrangements	Cross (B1) Parallel (B2)
Installation	Above ground
Can be connected with	Al, Stainless Steel (SSt), St/tZn
Tightening torque	10 Nm (use additionally threadlocker)

#### Comply with

The component complies with standard IEC EN 62561-1 "Lightning protection system components (LPSC) – Part 1 : Requirements for connection components".

#### Manufacturing Quality Control

Manufacturing quality control according standard ISO 9001

#### Country of Origin

Greece

#### Unit: piece / Package: 1 piece

See following application of the down termination.

We reserve the right to introduce changes in the component due to technical evolution.

## PRODUCT DATA SHEET

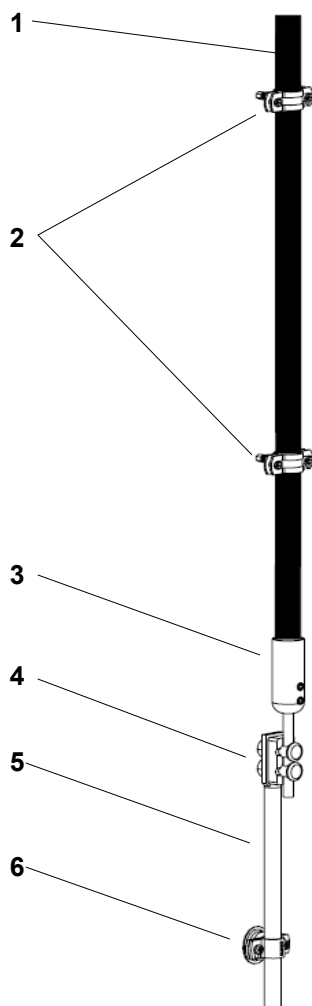
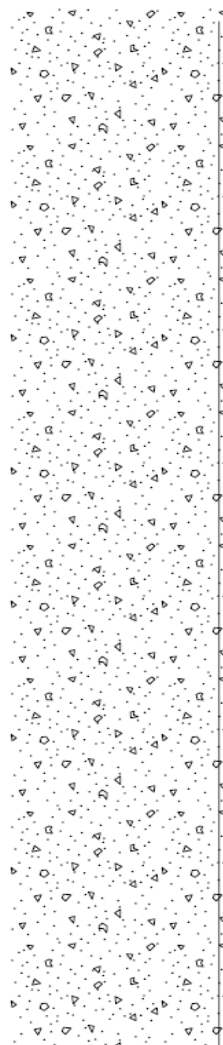
### LIGHTNING PROTECTION AND EARTHING SYSTEM COMPONENTS

**Code: 65 40 002**

ed.04/2023

**Description: Down termination for LCCC insulating down conductor**

page 2 of 2



1. LCCC insulating down conductor (not included)
2. Fastener for LCCC (not included).
3. Down termination
4. Double bonding clamp (not included)
5. Earth lead-in rod (not included)
6. Fastener for earth lead-in rod (not included)