

PRODUCT DATA SHEET

LIGHTNING PROTECTION AND EARTHING SYSTEM COMPONENTS

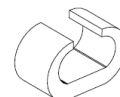
Code: 65 20 037
ed.02/2021
Description: Compression connector type C

Application

Type C copper compression connector, for connecting stranded conductors. Used in earthing system.

Classification

- General use
- Permanent connection



Technical characteristics

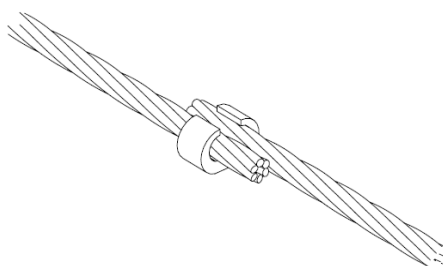
| | |
|----------------------------------|--|
| Material | Copper |
| Installation instructions | |
| Conductor's dimensions | 35 mm ² / 16–35 mm ² |
| Connection arrangement | Parallel |
| Installation | Above ground, buried in ground, embedded in concrete |
| Can be connected with | Cu, Cu/eSn |

Manufacturing Quality Control

Manufacturing quality control according standard ISO 9001

Country of Origin

Greece

Unit: piece / Package: 100 pieces


We reserve the right to introduce changes in the component due to technical evolution.