

PRODUCT DATA SHEET

LIGHTNING PROTECTION AND EARTHING SYSTEM COMPONENTS

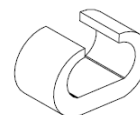
Code: 65 20 075
ed.02/2021
Description: Compression connector type C

Application

Type C copper compression connector, for connecting stranded conductors. Used in air termination system, down conductor system, earthing system.

Classification as per IEC 62561

- Heavy duty (H – 100 kA)
- General use
- Intended to withstand a static mechanical load
- Permanent connection



Technical characteristics

Material	Copper
----------	--------

Installation instructions

Conductor's dimensions	50–70 mm ² / 50–70 mm ²
Connection arrangement	Parallel (B2)
Installation	Above ground, buried in ground, embedded in concrete
Can be connected with	Cu, Cu/eSn

Testing as per IEC 62561

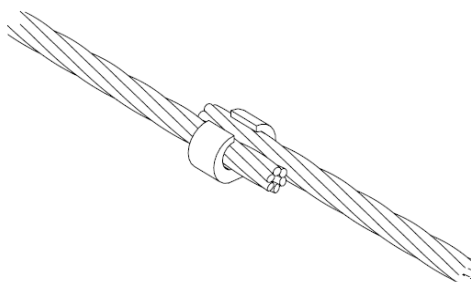
The component has successfully passed the testing requirements of standard IEC EN 62561-1 "Lightning protection system components (LPSC) – Part 1 : Requirements for connection components".
Test report No **31065** by accredited laboratory as per ISO 17025

Manufacturing Quality Control

Manufacturing quality control according standard ISO 9001

Country of Origin

Greece

Unit: piece / Package: 50 pieces


We reserve the right to introduce changes in the component due to technical evolution.