

PRODUCT DATA SHEET

LIGHTNING PROTECTION AND EARTHING SYSTEM COMPONENTS

Code: 65 20 120

ed.09/2024

Description: Compression connector type C

Application

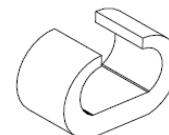
Type C copper compression connector, for connecting stranded conductors. Used in air termination system, down conductor system, earthing system.

Classification as per IEEE 837

- Electromagnetic force (EMF) withstand*: Asymmetrical current 100 kA first peak, 43 kArms @ 150ms
- Fault current withstand: 8,7 kA @ 10s
- Corrosion withstand: 500h of continuous salt spray

Classification as per IEC 62561

- Heavy duty (H – 100 kA)
- General use
- Intended to withstand a static mechanical load
- Permanent connection



Technical characteristics

Material	Copper
Installation instructions	
Conductor's dimensions	120 mm ² / 120 mm ²
Connection arrangement	Parallel (B2)
Installation	Above ground, buried in ground, embedded in concrete
Can be connected with	Cu, Cu/eSn

Testing

The component has successfully passed the testing requirements of standards:

- IEC EN 62561-1 "Lightning protection system components (LPSC) – Part 1 : Requirements for connection components". Test report No **30948** by accredited laboratory as per ISO 17025
- IEEE 837 "Permanent connections used in substation grounding". Test report No **32194***

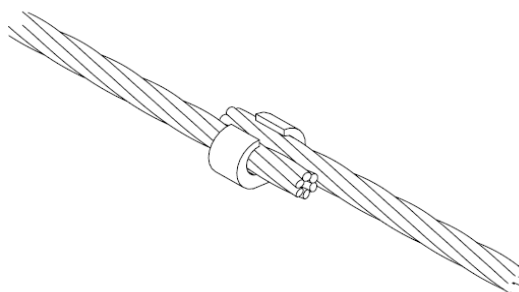
* EMF test performed according to ELEMKO requirements.

Manufacturing Quality Control

Manufacturing quality control according standard ISO 9001

Country of Origin

Greece

Unit: piece / Package: 25 pieces


We reserve the right to introduce changes in the component due to technical evolution.