

## PRODUCT DATA SHEET

### LIGHTNING PROTECTION AND EARTHING SYSTEM COMPONENTS

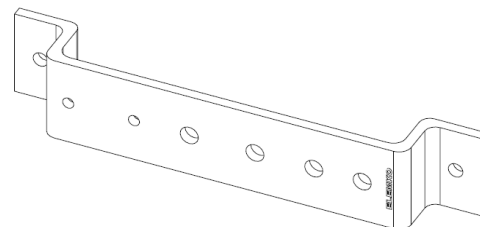
**Code: 66 20 004**
**ed.03/2021**
**Description: Equipotential earthing bar**

#### Application

Equipotential earthing bar.

#### Classification as per IEC EN 62561

- Heavy duty (H – 100 kA)
- General use
- Not intended to withstand a static mechanical load
- Non-permanent connection



#### Technical characteristics

Material Tin plated copper (Cu/eSn)

Dimensions 270x50x6 mm

#### Installation instructions

Connection arrangement B10 according to IEC EN 62561-1

Installation Above ground

Can be connected with Al, Cu, Cu/eSn, Stainless Steel (SSt), St/eCu, St/tZn

#### Comply with

The component complies with standard IEC EN 62561-1 "Lightning protection system components (LPSC) – Part 1 : Requirements for connection components".

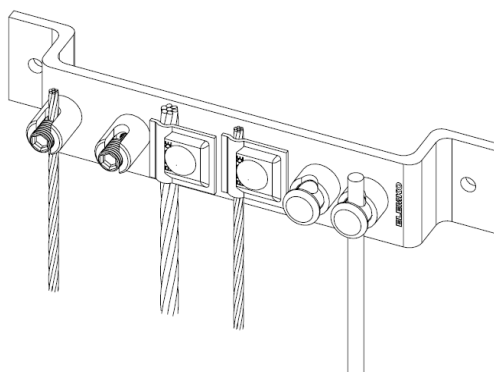
#### Manufacturing Quality Control

Manufacturing quality control according standard ISO 9001

#### Country of Origin

Greece

#### Unit: piece / Package: 1 piece



Typical application of the earthing bar  
(the connectors are not included)

We reserve the right to introduce changes in the component due to technical evolution.