

PRODUCT DATA SHEET

LIGHTNING PROTECTION AND EARTHING SYSTEM COMPONENTS

Code: 64 20 240 (copper) / 64 22 240 (tin plated copper)

ed.02/2021

Description: 240mm² nominal cross sectional area stranded conductor

Application

Copper or tin plated copper stranded conductor used as earth conductor.

Technical characteristics

Nominal cross sectional area	240 mm ²
Material	Copper (Cu) or tin plated copper (Cu/eSn)
Electrical resistivity	≤0,018 μΩm
Electrical resistance	≤0,0762 Ω/km
Tensile strength	200 – 450 N/mm ²



Installation instructions

Installation	Above ground, buried in ground, embedded in concrete
Can be connected above ground with	Cu, Cu-A (copper alloy), Cu/eSn, Stainless Steel (SSt), St/eCu
Can be connected buried in ground with	Cu, Cu-A (copper alloy), Cu/eSn, Stainless Steel (SSt), St/eCu
Can be connected in concrete with	Cu, Cu-A (copper alloy), Cu/eSn, Stainless Steel (SSt), St/eCu, St/tZn

Comply with

The component complies with standard IEC EN 62561-2 "Lightning protection system components (LPSC) – Part 2 : Requirements for conductors and earth electrodes".

Manufacturing Quality Control

Manufacturing quality control according standard ISO 9001

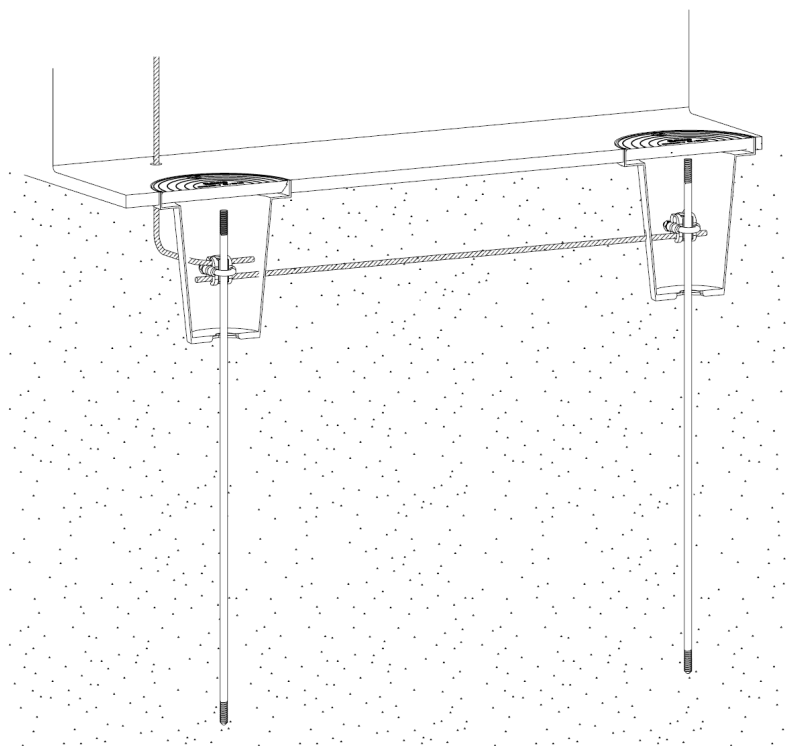
Country of Origin

Greece

Needed accessories¹⁾

Clamps (e.g. 6222240), fasteners (e.g. 6130240) for the spacing consult fasteners' installation instructions.

Unit: meter



Typical application of the conductor

¹⁾ See relevant data sheets

We reserve the right to introduce changes in the component due to technical evolution.